



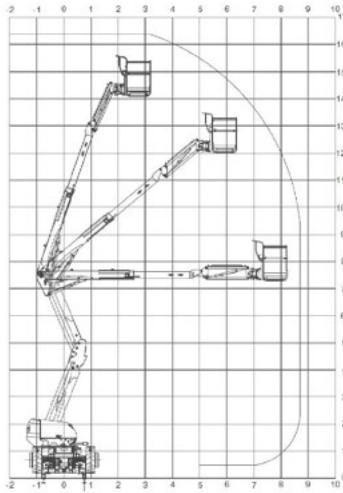
## SKYRAILER 400 RR WORK PLATFORM

- Hydrostatic drive with progressive acceleration and braking
- Pantograph attachment with stagger and digital height reading
- 1000kg trailer attachment
- Rear view digital camera
- Full ALO capability
- 400kg basket capacity
- 110v power socket in basket
- Four-wheel drive and four-wheel steer in road mode

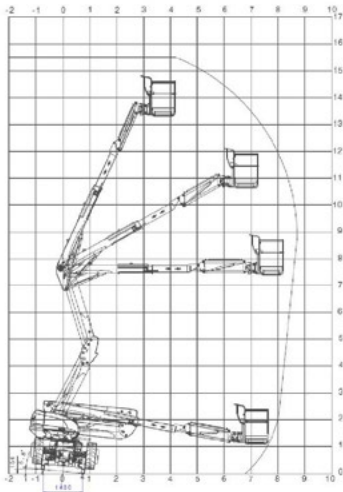
# SKYRAILER 400RR WORK PLATFORM

# SPECIFICATIONS

## OPERATIONS



Without cant



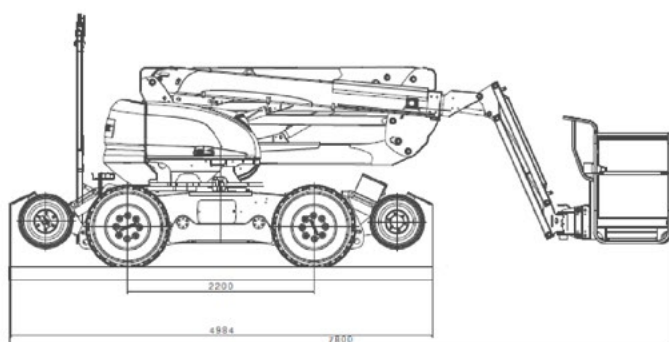
Cant 150mm

## PERFORMANCE

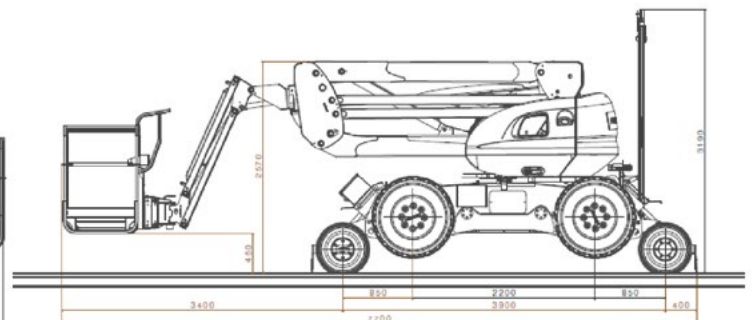
KUBOTA engine	34.1 kW
Pump for transmission and equipment	38 cm <sup>3</sup>
Transmission	4 wheel drive
Direction	4 wheel steer
Oscillation	1 axle
Maximum speed on rail (travelling/working)	16 km/h & 3 km/h
Maximum speed on tires	6 Km/h
Rail wheel diameter	580 mm
Motorised axle	2 standard
Braked axles	2 standard
Braking distance	< 18m and without slipping
Towing on track	Engine unclutching — max speed 10 Km/h
Maximum rail gradient	40%
Maximum grade ability	40%
Maximum cant on rail	200 mm
Maximum cant on road	5°
Tank	55 L
Hydraulic tank	100 L
Battery	12V / 105v Ah
Tare weight	12 600 kg

## LIFTING BASKET

Maximum height floor/track	14,45 m
Maximum reach	8,50 m
Payload	3 operators or 400 kg
Turret slewing angle of rotation	350°
Basket turn	180°
Articulation angle of the fly-jib	- 70°/+70°
Maximum platform dimensions	2 300 x 930 mm
Maximum wind speed	45 Km/h



Road mode



Rail mode



## TXM Plant

The Grange, Harnett Drive, Wolverton Mill, Milton Keynes, MK12 5NE

T: +44 (0) 1275 390573 F: +44 (0) 8706 089562 E: sales@txmplant.co.uk W: www.txmplant.co.uk