

3. Technical Specification



The Philmor/GOS B135 Series conversions of New Holland/Kobelco SK135 range of hydraulic excavators meet all the appropriate provisions of the relevant legislation implementing certain European Directives. Namely 2006/43/EC Machinery Directive legitimately displays the CE Mark on the maker's plate.

3.1 Standard Equipment

- 3.1.1 Machine built in general accordance with UK Network Rail Group Standard RIS-1530-PLT Issue 4, for the use of road/rail equipment on the UK Network Rail infrastructure
- 3.1.2 Variants available to suit 1000mm, 1435 mm (Standard/UK/Network Rail) and 1600 mm (Irish Rail) nominal gauges.
- 3.1.3 LU specification compliant version available
- 3.1.4 Heavy-duty steel railgear
- 3.1.5 500mm diameter steel rail wheels
- 3.1.6 Hydrostatic rail drive with slip reduction system
- 3.1.7 Hydraulically operated railgear with double pilot-operated check valves
- 3.1.8 Anti-burst protection on ALL boom elements
- 3.1.9 Pivoting axle with axle-lock cylinders and pilot-operated check valves
- 3.1.10 GKD 3rci Rated Capacity Indicator system, including data logging
- 3.1.11 Fully automatic trailer park and service braking (where specified/fitted)
- 3.1.12 Quick connect service and park brake couplings front and rear for towing trailers

BRAKE OPERATION TYPE (WHERE FITTED)	PARK BRAKE - AVAILABLE RELEASE PRESSURE RANGE (BAR)	SERVICE BRAKE - AVAILABLE INPUT PRESSURE RANGE (BAR)
Hydraulic	30 MIN, 100 MAX	0-100 MAX
Air	4.0, MIN, 6.0 MAX	0-6 MAX

- 3.1.13 Electrical sockets front and rear for operating automatic lighting on trailers Also compatible with Philmor T Series trailer personnel carrier attachments (Variant B only).
- 3.1.14 Chassis mounted rail lighting with automatic direction switching and neutral "all red" condition
- 3.1.15 Cab mounted fire extinguisher
- 3.1.16 Philmor/GOS RailSafe CANbus based control system with diagnostic facilities
- 3.1.17 Emergency recovery tow bar
- 3.1.18 Machine emergency recovery system
- 3.1.19 Maximum operating gradient in rail mode = 1 in 25
- 3.1.20 Maximum operating cant in rail mode = 150mm
- 3.1.21 Maximum travelling cant in rail mode = 200mm

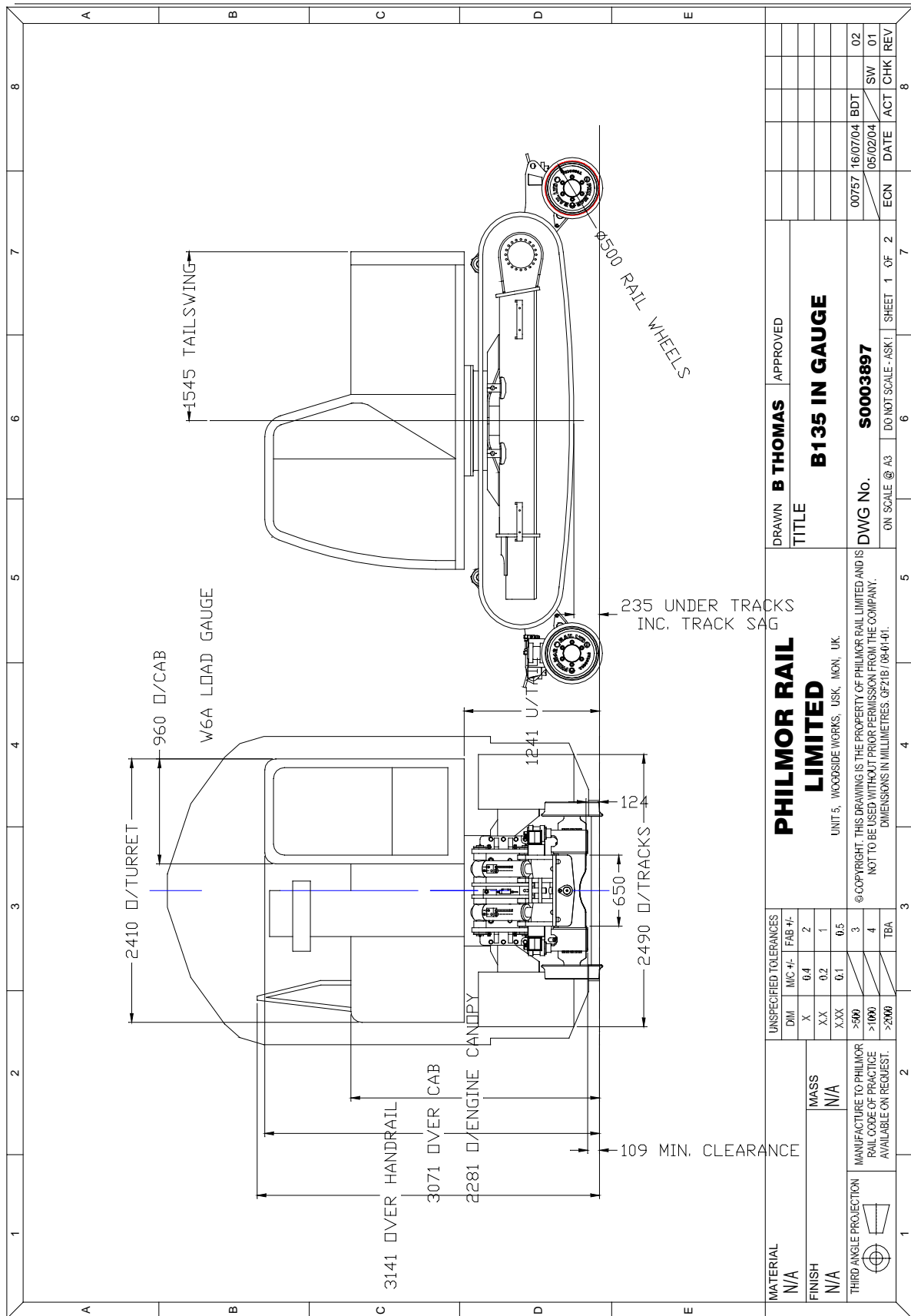


NOTE: Not all machines ALL machines are fitted with ALL items/features as listed above. Dependent on machine end destination and/or customer specification.

3.2 Detail Specification

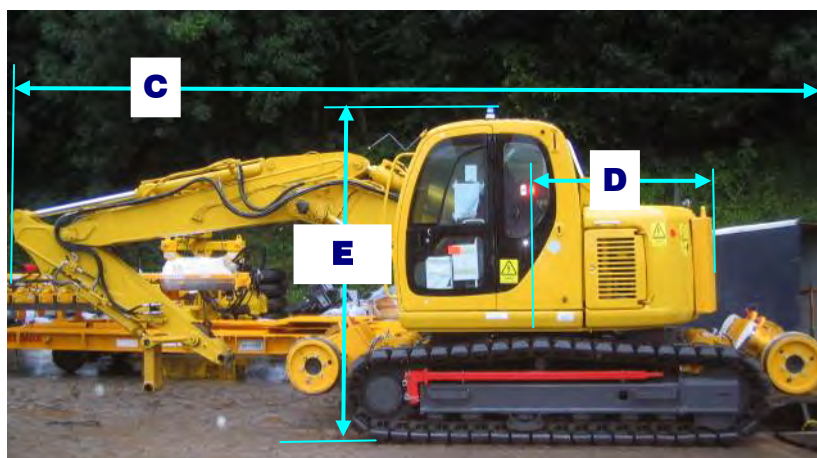
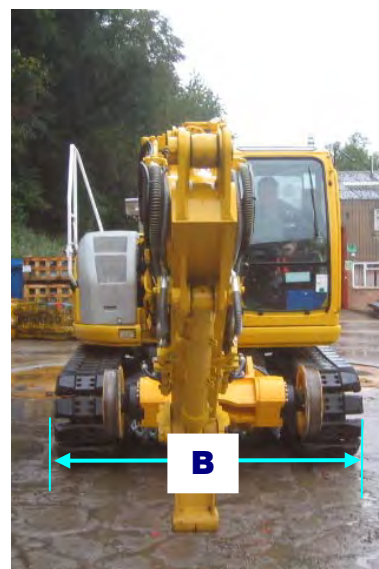
Model	RIS-1530-PLT APPROVED	LUL APPROVED	Enhanced Lifting	Nominal Machine Weight (tonnes)
B135RS	✓	✗	✗	21.9
B135RH	✓	✗	✓	22.9
B135SU	✓	✓	✗	21.1
B135UH	✓	✓	✓	22.1

3.3 Gauge drawings



Network Rail gauge drawing

3.4 Transport and other dimensions



REFERENCE	DESCRIPTION	APPROX DIMENSIONS (TWO PIECE BOOM AND 2.1 M DIPPER)
A	Shipping width (Rear)	2490 mm
B	Shipping width (Front)	2490 mm
C	Shipping length	8020 mm
D	Tailswing	1545 mm
E	Shipping height (Cab)	2900 mm
F	Height ARL under counterweight (when in rail mode)	1300 mm MIN