

ENGINE

Type 4 cylinder, direct injection diesel, turbo-charged and air to air intercooled

Model Komatsu SAA4D102-E2

Power
ISO 9249 (Net) 80 kW (109 PS / 107 HP) at 2300 rpm

Bore x stroke 102 mm x 120 mm

Piston displacement 3.92 ℓ

ELECTRICAL SYSTEM

Alternator 24 Volt 45 ampere

Batteries 2 x 12 Volt – 95 AH

Starter motor 24 Volt – 5.5 kW

HYDRAULIC SYSTEM

Type HydraulMind. Closed-centre system with load sensing and pressure compensation valves

Additional circuits Additional double-acting circuit fitted as standard. Depending on specification upto 2 additional circuits can be installed

Main pump Variable displacement piston pump supplying boom, arm, bucket, swing and travel circuits

Maximum pump flow 299 ℓ/min

Maximum pressures

Standard 325 kg/cm²

Power Max 355 kg/cm²

Pilot circuit 33 kg/cm²

STEERING SYSTEM

Type Hydraulically supplied from a separate gear pump and controlled through an orbitrol valve

Maximum pressure 150 kg/cm²

Minimum turning radius 7200 mm (to centre of outer wheel)

SWING SYSTEM

Type Axial piston motor driving through planetary double reduction gearbox

Swing lock Electrically actuated wet multi-disc brake integrated into swing drive. An additional mechanical pin can be engaged from inside the operator cab

Swing speed 0 to 12 rpm

Maximum pressure 300 kg/cm²

ENVIRONMENT

Noise levels

LWA External noise 99 dB(A) (95/27/EC - dynamic value)

LPA Operator ear noise 79 dB(A) (ISO 6396 -dynamic value)

Blue angel certified

Meets EC stage II exhaust emission regulations

BRAKE SYSTEM

Type Dual circuit hydraulic braking system supplied from a separate gear pump

Service brakes Pedal actuated wet multi-disc brakes integrated into axle hubs
Service brake pressure = 60 kg/cm²

Parking brake Electrically actuated wet multi-disc “pressure off” brake integrated into transmission

Maximum pressure 150 kg/cm²

SERVICE / REFILL CAPACITIES

Fuel tank 250 ℓ

Radiator 20 ℓ

Engine 16 ℓ

Swing drive 4 ℓ

Hydraulic tank 135 ℓ

Transmission/clutch 1.1 ℓ / 0.5 ℓ

Front differential 15 ℓ

Rear differential 20 ℓ

Front axle hub 2.5 ℓ

Rear axle hub 2.7 ℓ

Swing pinion grease amount 8 ℓ

TRANSMISSION

Type Fully automatic transmission with permanent 4 wheel drive

Travel motors 2 variable displacement axial piston motors

Maximum pressure 355 kg/cm²

Travel modes 3 travel modes:

Hi mode 0 to 30 km/h

Mi mode 0 to 10 km/h

Lo mode 0 to 3.5 km/h

A maximum speed restriction of 20 km/h is available as an option

Maximum tractive effort .. 7,300 kg (in medium and high mode) 20 km/h
8,400 kg (in medium and high mode) 30 km/h
Optional 8,400 kg (in medium and high mode) 20 km/h

Axle oscillation 7° Oscillation. Lockable in any position from the operator cab

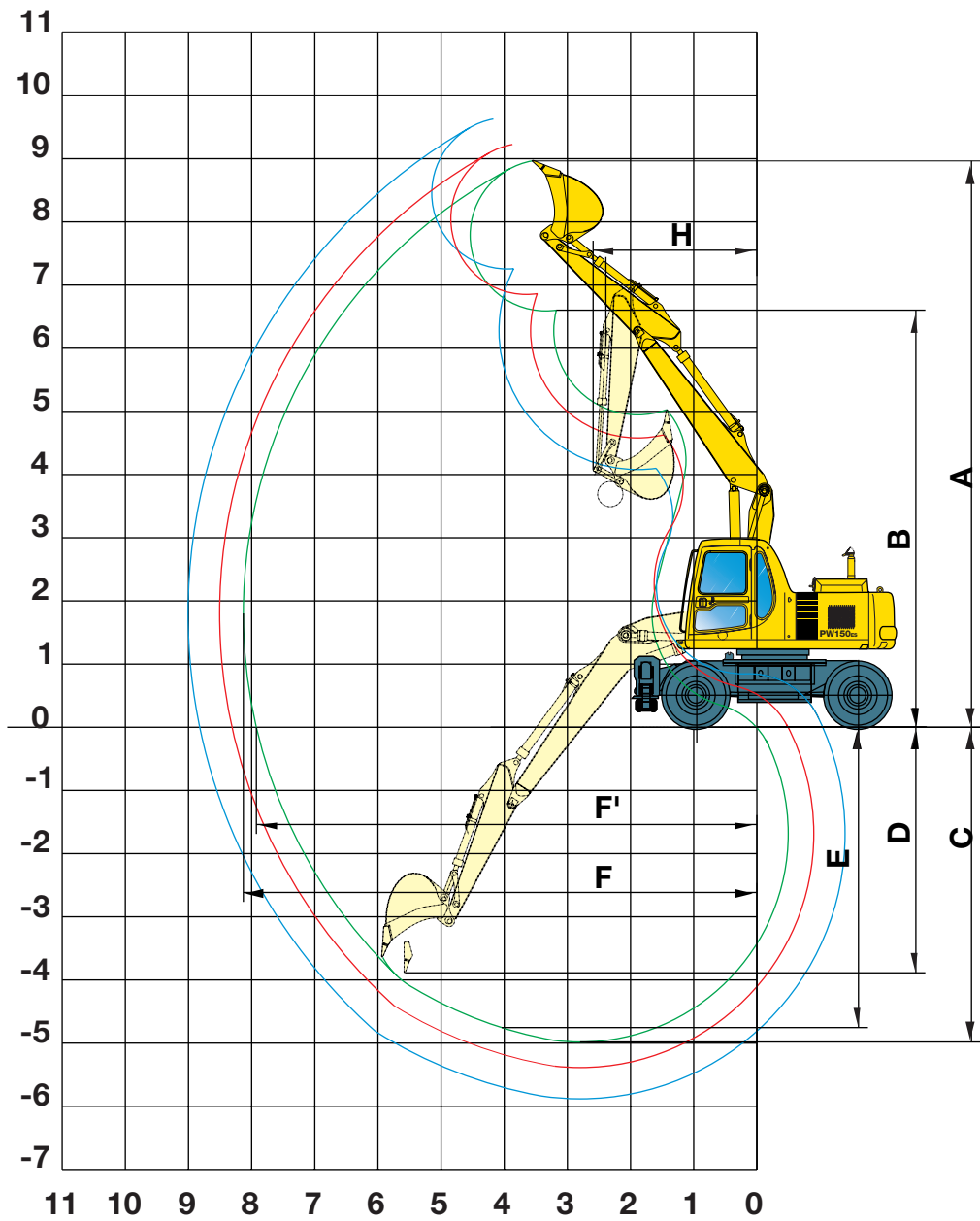
OPERATING WEIGHT*

Arm length 2.5 m

Rotating arm length 2.6 m

Undercarriage type	Operating weight	Operating weight	Operating weight
	2-piece boom	1-piece boom	rotating arm/2PB
Rear blade	14480 kg	14150 kg	–
Rear outrigger	14850 kg	14520 kg	–
Four outrigger	15670 kg	15340 kg	16490 kg
Front outrigger + blade	15300 kg	14970 kg	16120 kg

* Operating weight without bucket.



Note: In all cases bucket radius is 1207 mm from pivot to point of tooth.

TWO-PIECE BOOM

		2100 mm	2500 mm	3000 mm
Arm length		2100 mm	2500 mm	3000 mm
A	Max. digging height	8965 mm	9225 mm	9630 mm
B	Max. dumping height	6605 mm	6865 mm	7260 mm
C	Max. digging depth	4980 mm	5390 mm	5880 mm
D	Max. vertical wall digging depth	3886 mm	4265 mm	4725 mm
E	Max. digging depth of cut for 8° level	4755 mm	5180 mm	5700 mm
F	Max. digging reach	8130 mm	8510 mm	9010 mm
F'	Max. digging reach at ground level	7925 mm	8310 mm	8820 mm
H	Min. swing radius	2595 mm	2640 mm	2820 mm